

HOLE 4C

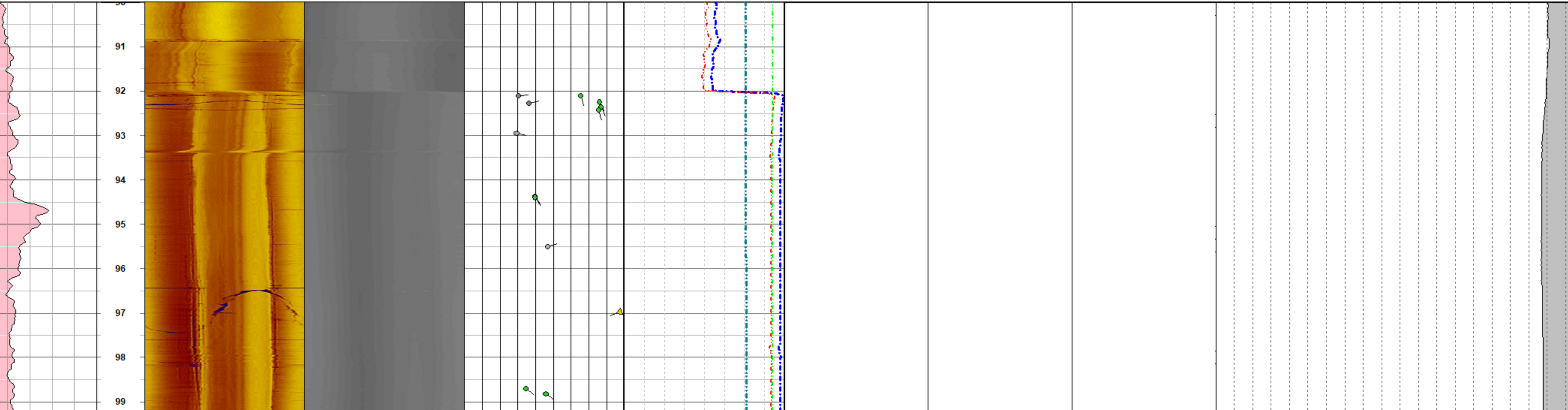
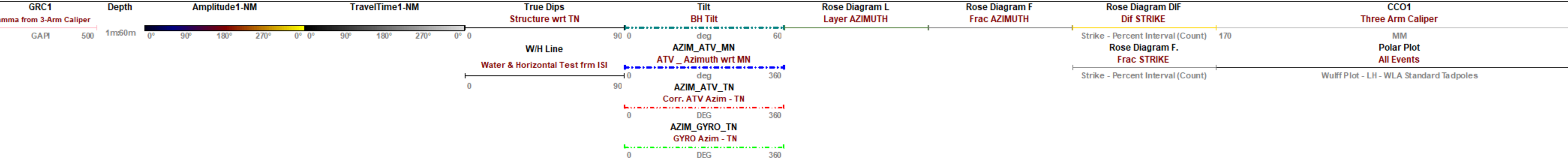
Geological Structure Log

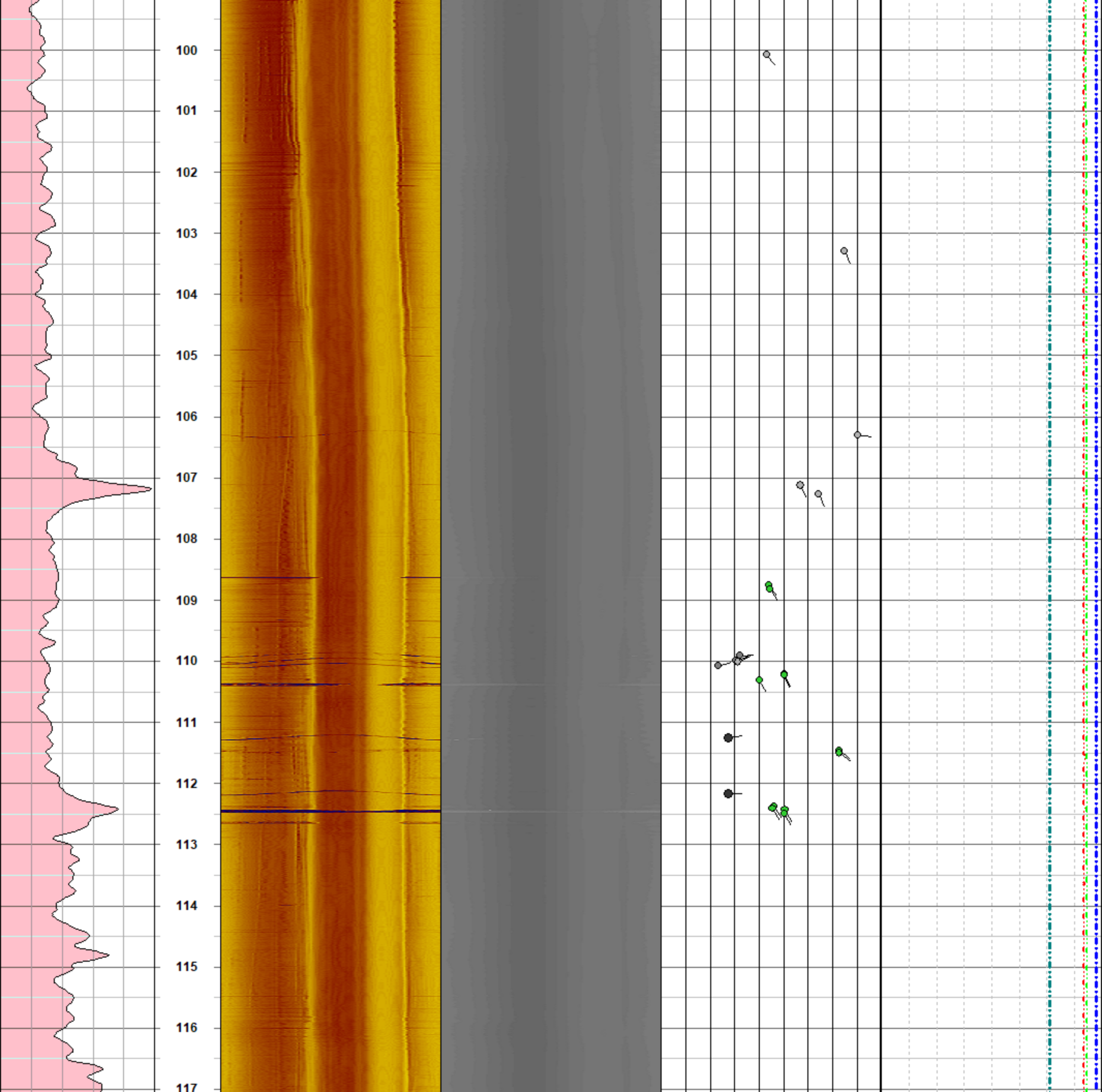
Scale:1m : 60m

Company:	UJ	Date Logged:	MAY 2022	Structural Image Picked :	WRT MAG. NORTH	ATV Tool Manufacturer :	ALT
Hole ID:	HOLE 4C	Depth Logged:	351.49m	Caliper used in Structure Log:	CCO1	ATV Model:	ABI40
Field:	BARBERTON	Hole Diameter:	HQ	Azimuth used in Structure Log True North Orientation:	TN Azimuth	ATV Serial Number :	ATV 083602
Province:	MPUMALANGA	Casing:	90.84M	Water table & Horizontal line test:	Done (W/H LINE)		
Country:	South Africa	Water Level:	27m	Mag. Declination Applied:	- 20°		



Dips Legend	✓ BEDS - Sedimentary bed or magmatic layer	✓ MINR - Minor fracture	✓ INTR - Intermediate fracture	✓ MAJR - Major fracture	✓ OPEN - Open fracture
	✓ DIF - Drilling induced fracture				





Wulff Plot - LH - WLA Standard Tadpoles
Depth: 90.00 [m] to 150.00 [m]
Q1

