

HOLE 4B

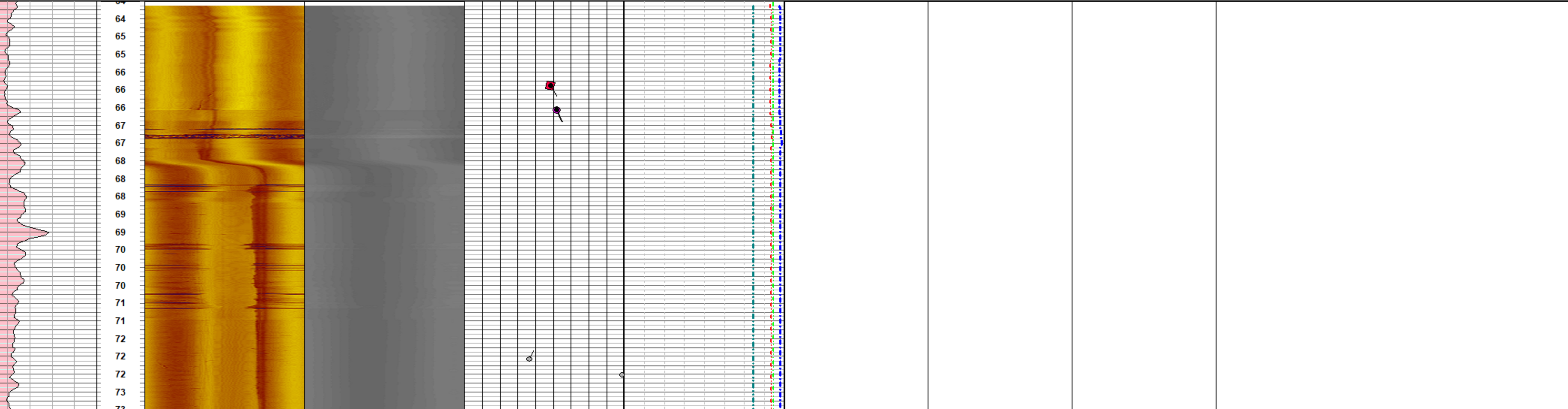
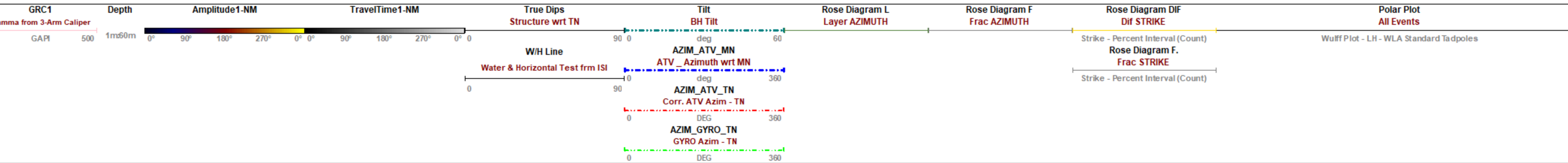
Geological Structure Log

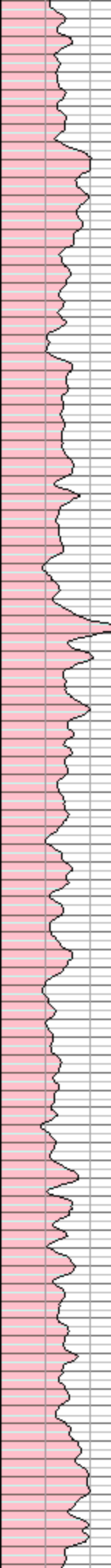
Scale:1m : 60m

Company:	UJ	Date Logged:	MARCH 2022	Structural Image Picked :	WRT Magnetic North	ATV Tool Manufacturer :	ALT
Hole ID:	HOLE 4B	Depth Logged:	355m	Caliper used in Structure Log:	CCO1	ATV Model:	ABI40
Field:	Barberton	Hole Diameter:	HQ	Azimuth used in Structure Log True North Orientation:	AZIM_ATV_TN	ATV Serial Number :	ATV 083602
Province:	Mpumalanga	Casing:	66.60M	Water table & Horizontal line test:	Done (W/H LINE)		
Country:	South Africa	Water Level:	64.00m	Mag. Declination Applied:	- 20°		

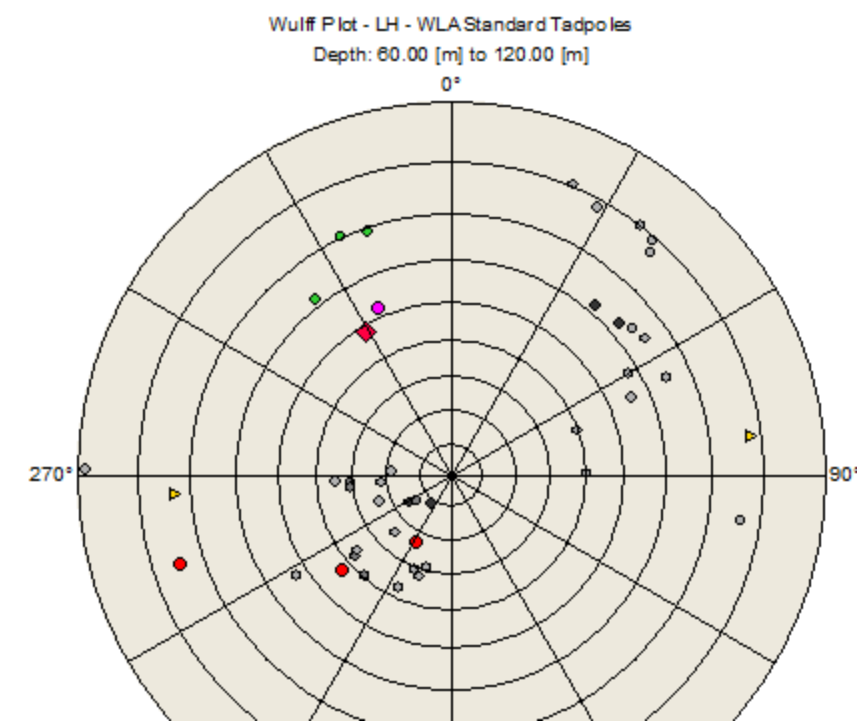
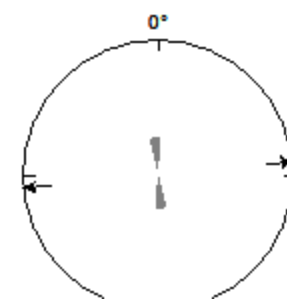
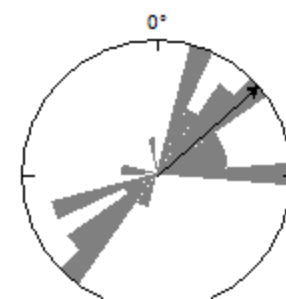
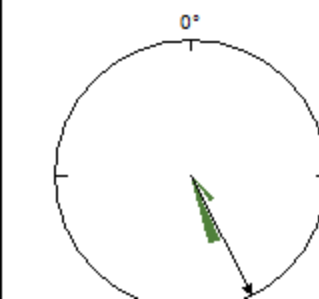
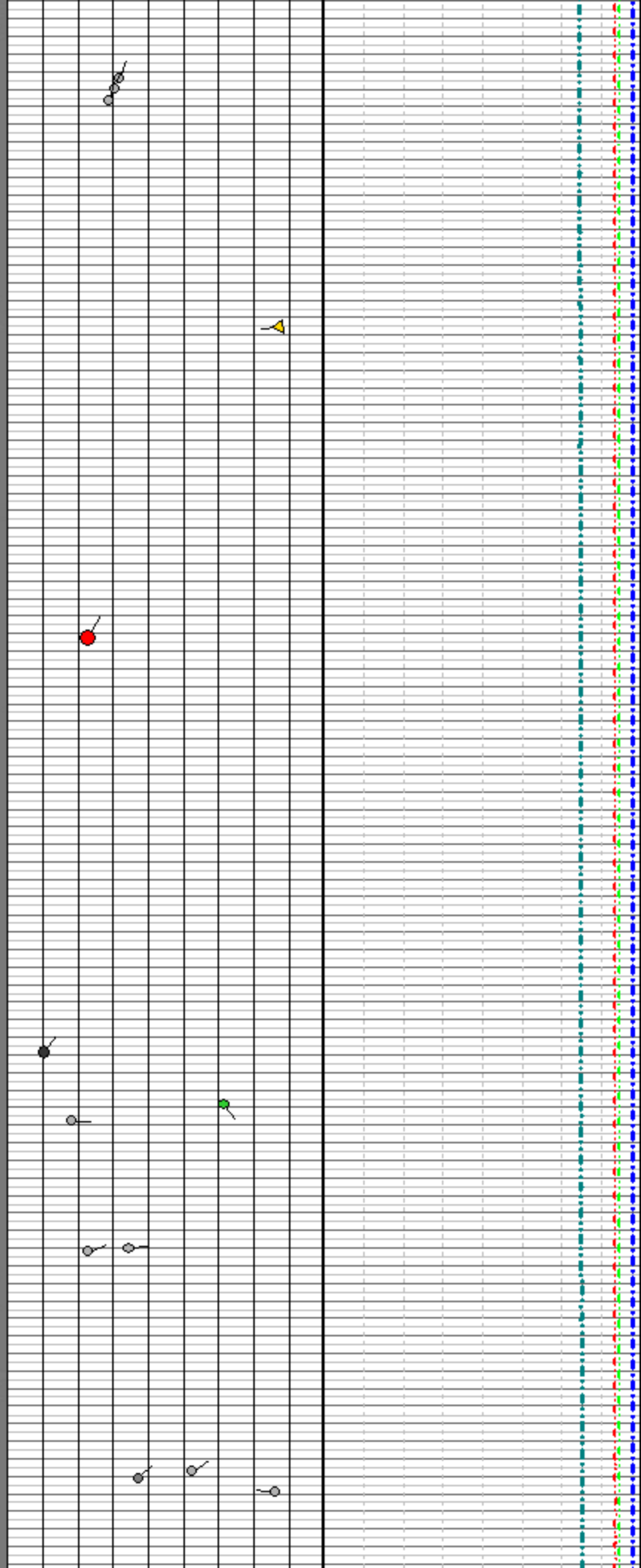
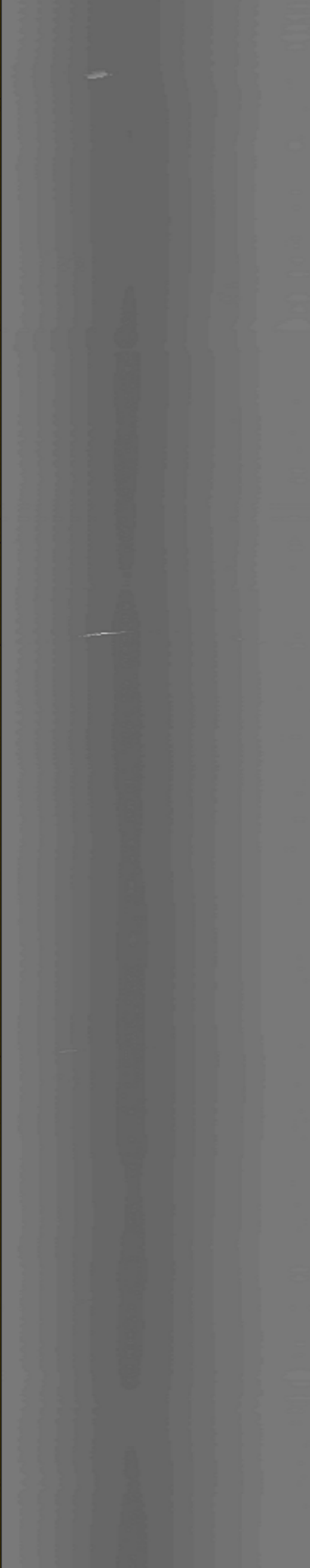
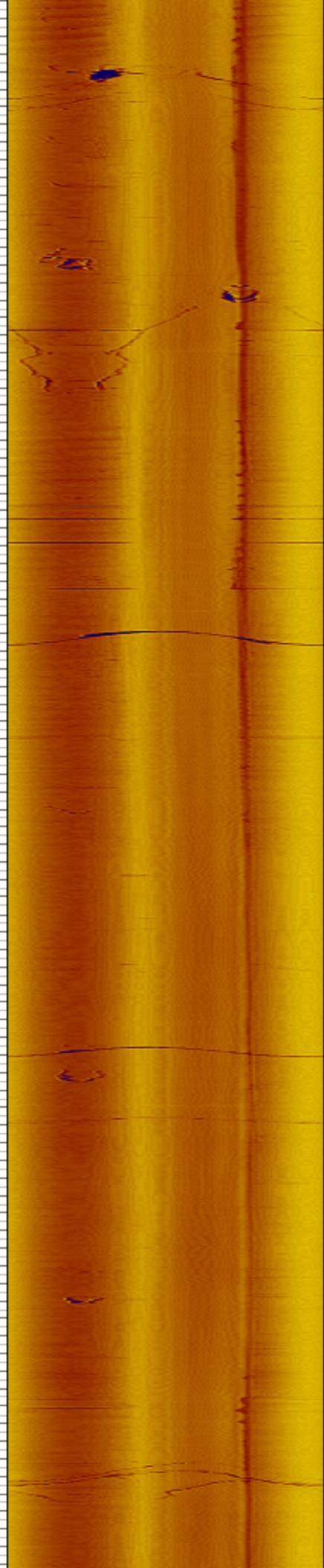


Dips Legend	✓ BEDS - Sedimentary bed or magmatic layer	✓ MINR - Minor fracture	✓ INTR - Intermediate fracture	✓ MAJR - Major fracture	✓ OPEN - Open fracture
	✓ DIF - Drilling induced fracture	✓ WATER TABLE - Water Table	✓ HORIZONTAL LINE - Horizontal line		



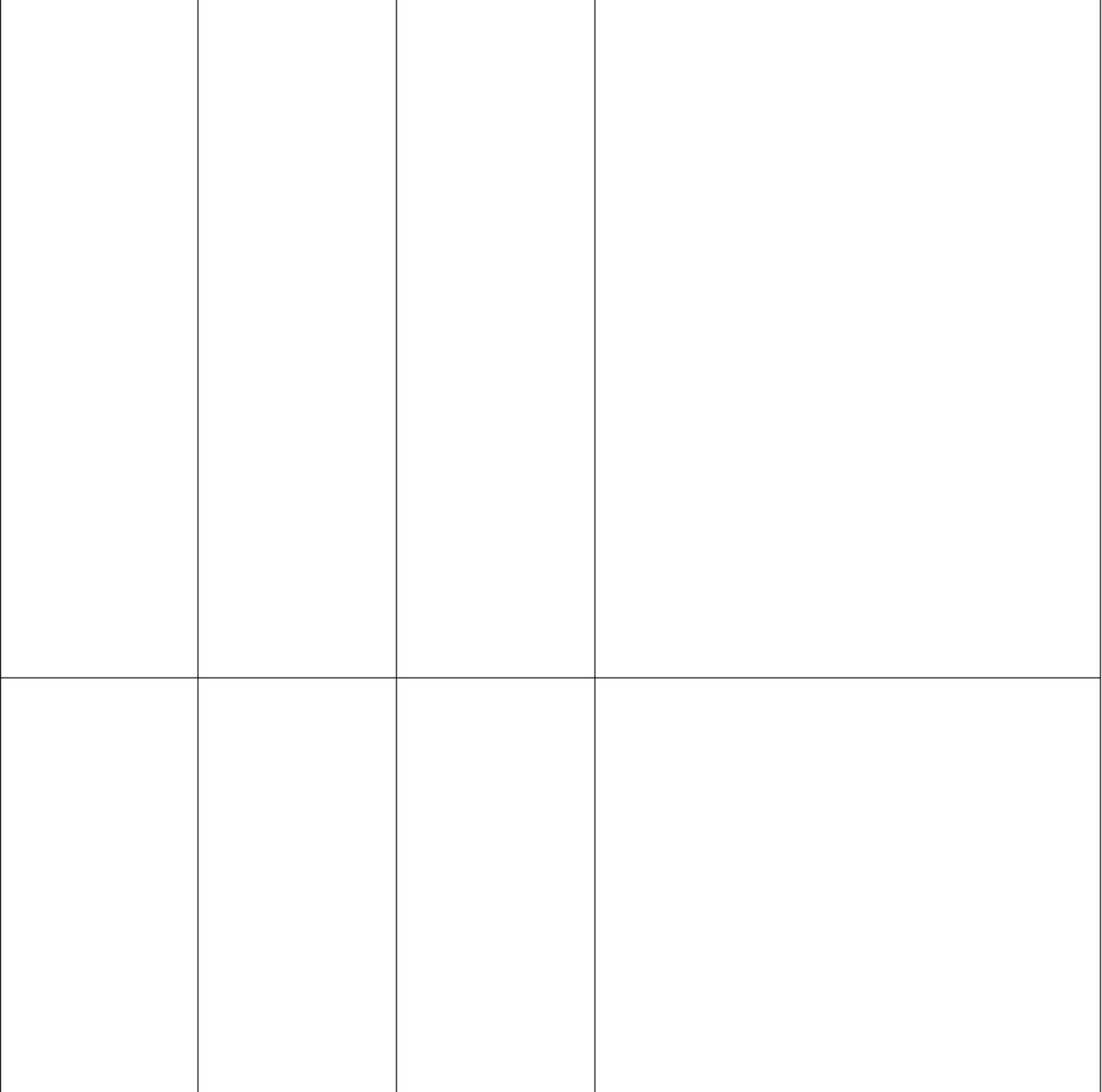
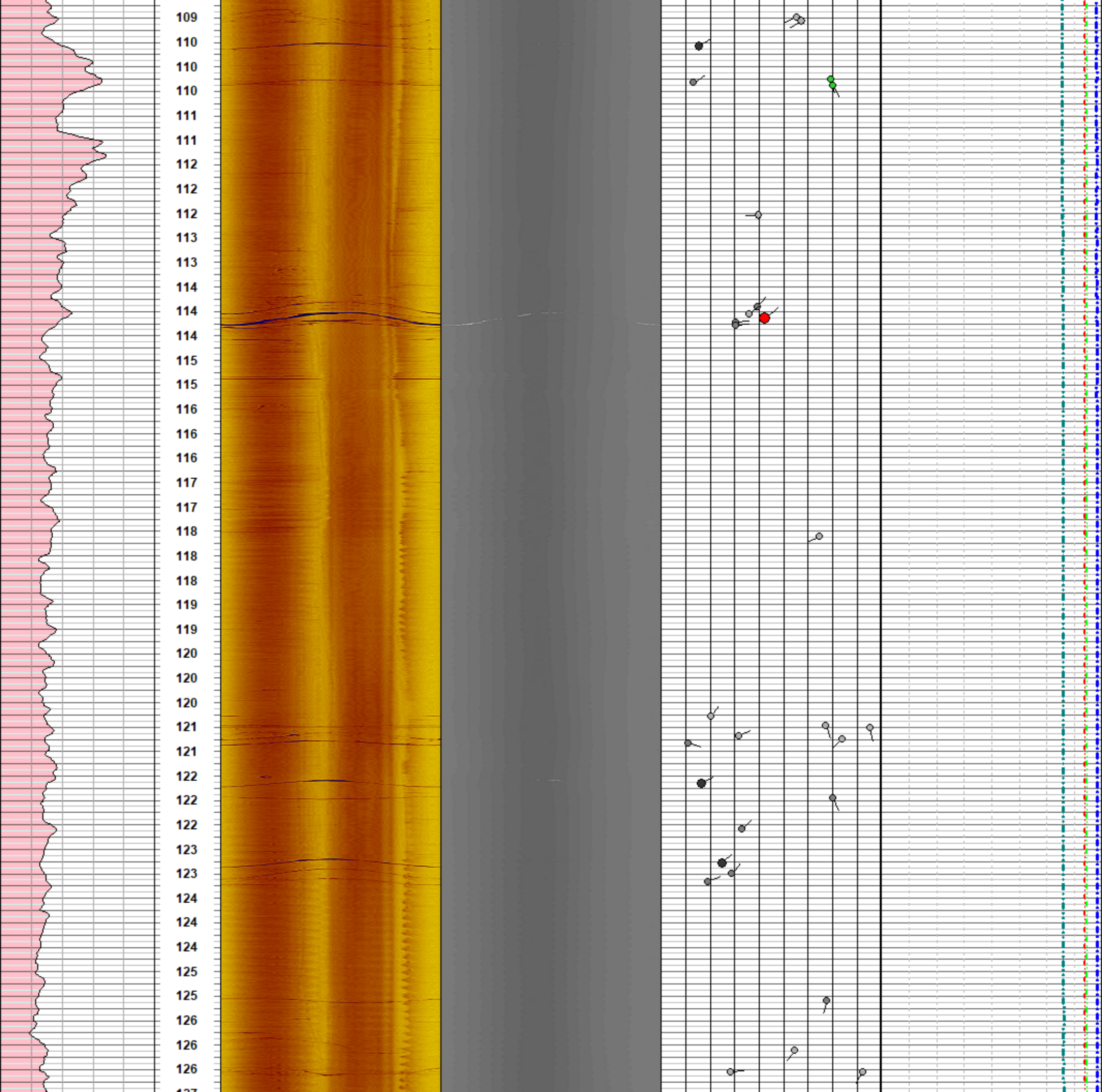


73  
74  
74  
74  
75  
75  
76  
76  
76  
77  
77  
78  
78  
78  
79  
79  
80  
80  
80  
81  
81  
82  
82  
82  
83  
83  
84  
84  
84  
85  
85  
86  
86  
86  
87  
87  
88  
88  
88  
89  
89  
90  
90  
90  
91

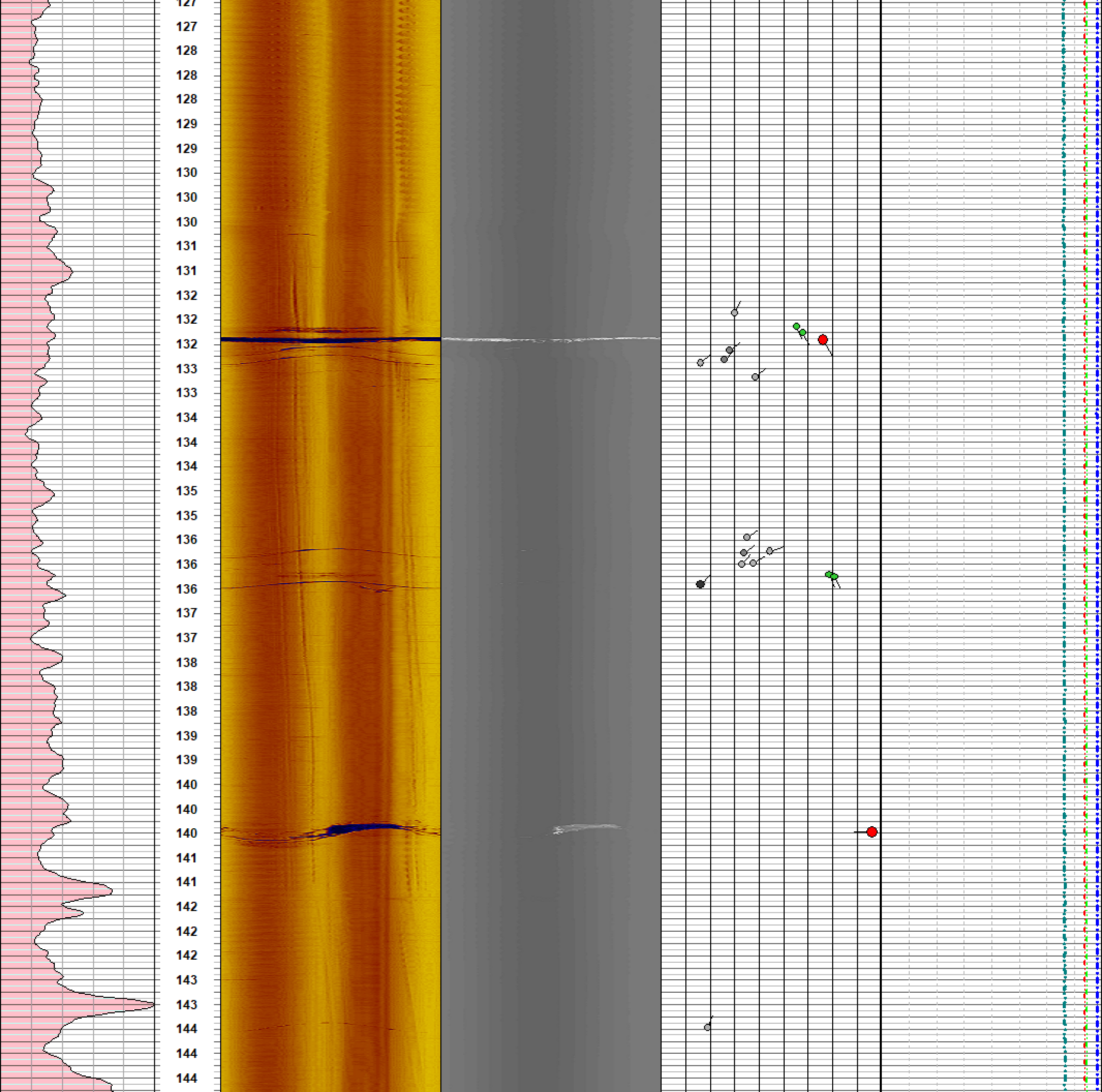


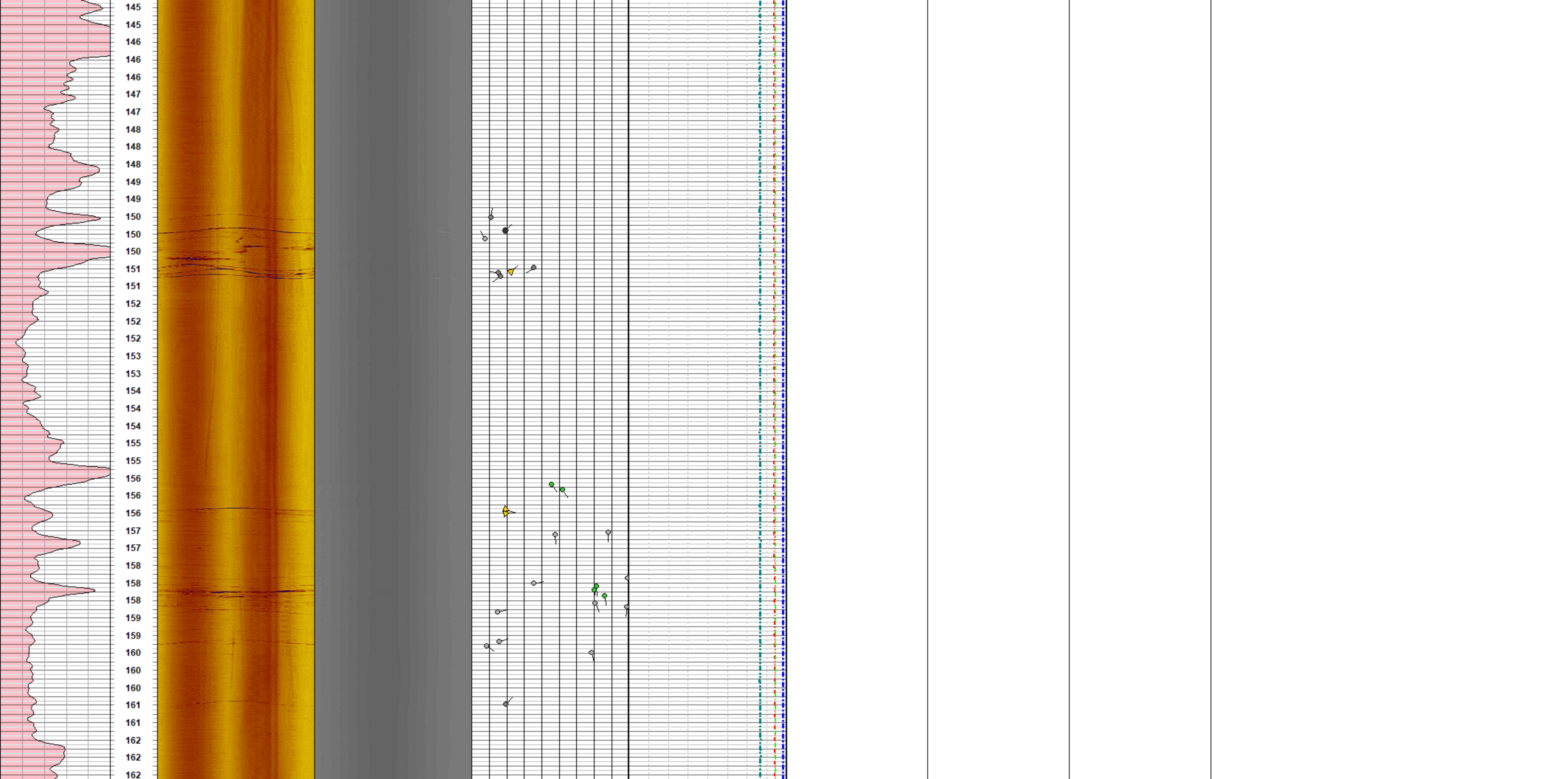


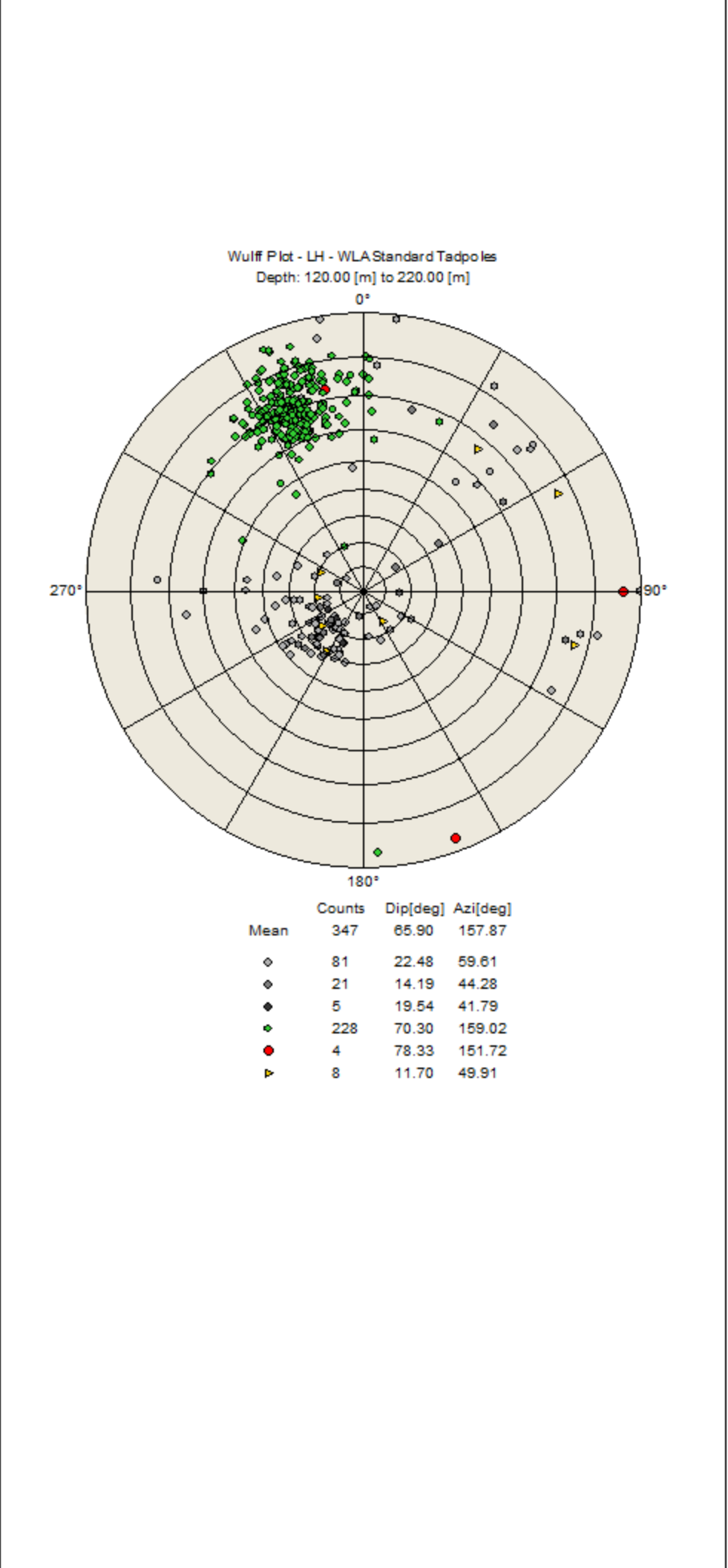
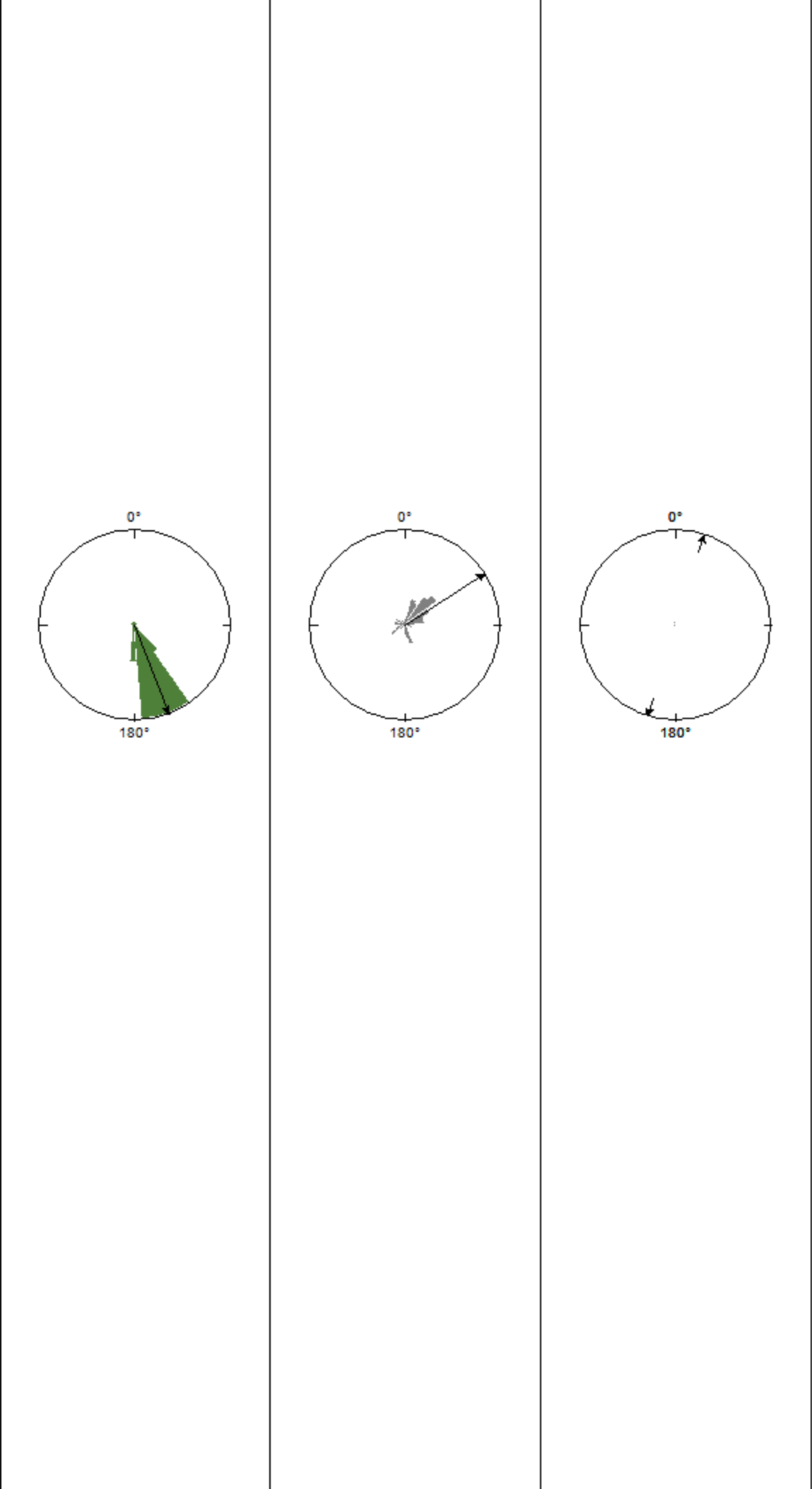
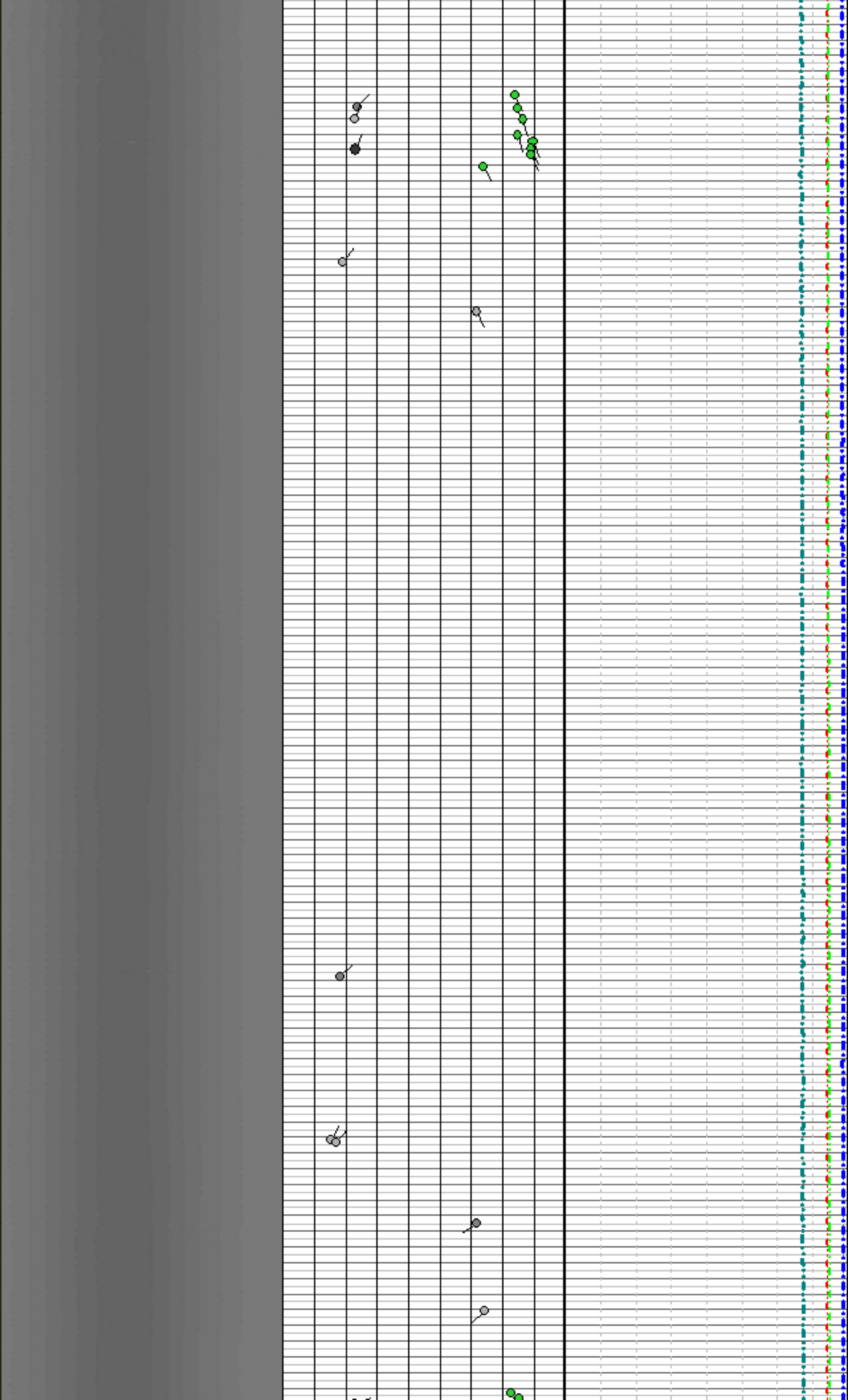
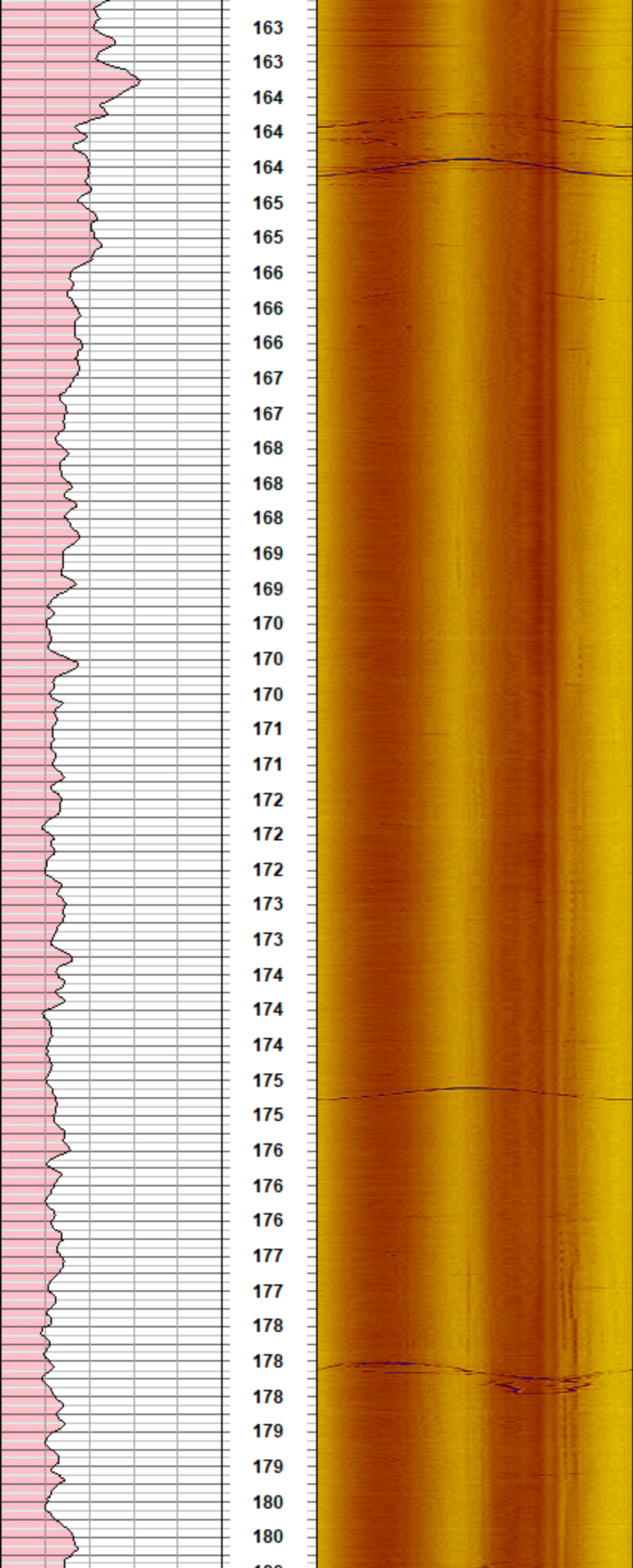




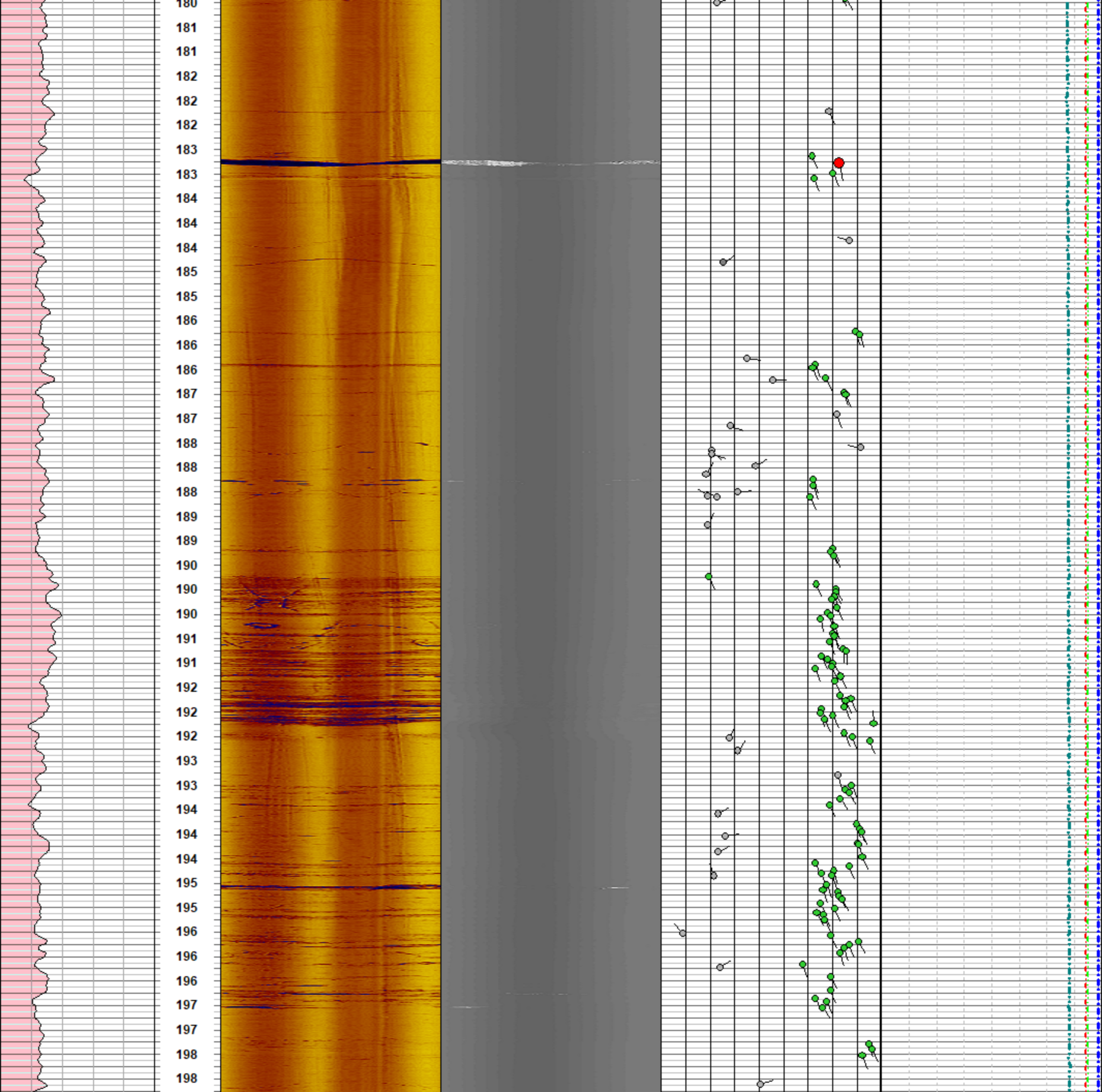


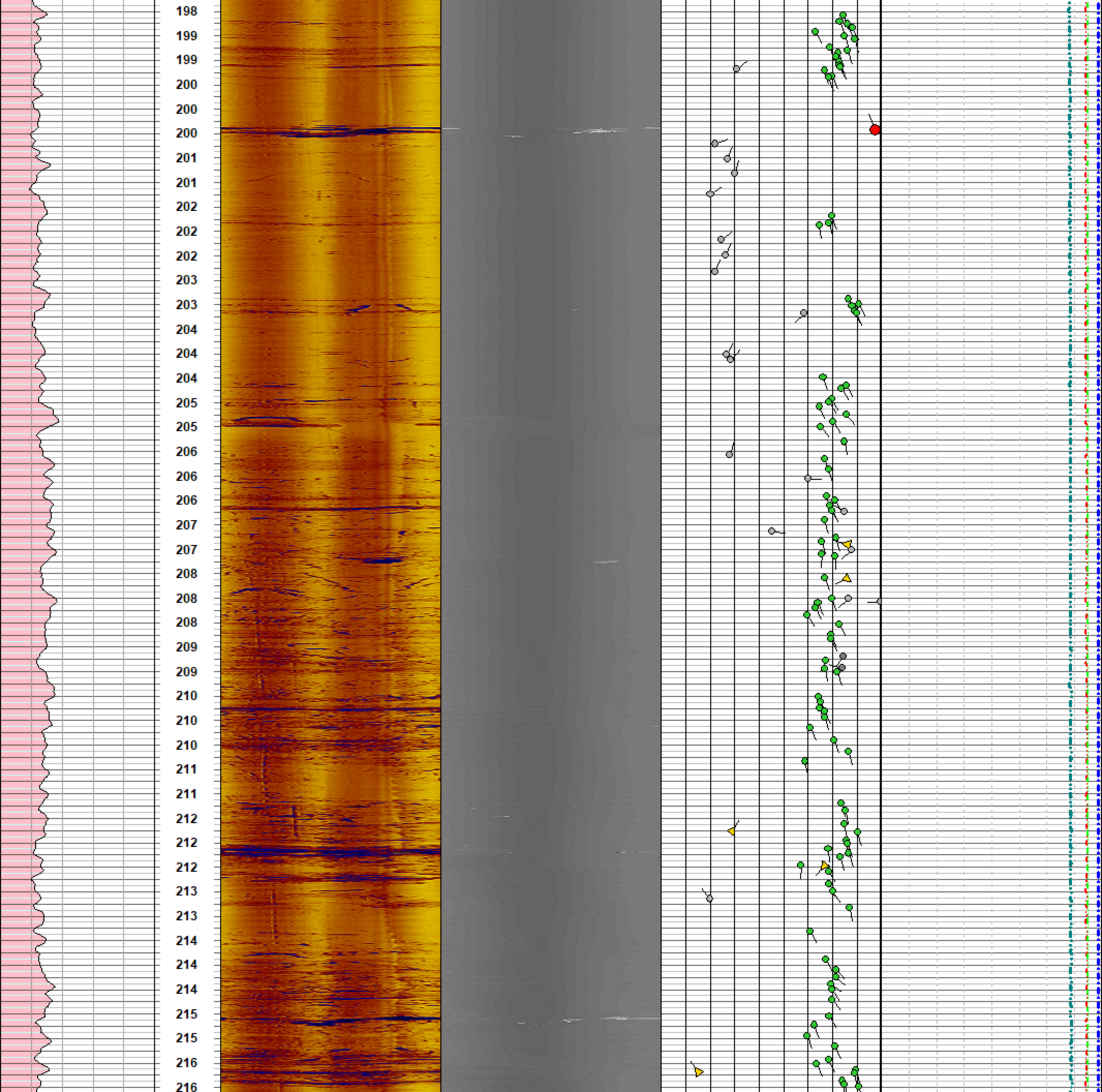




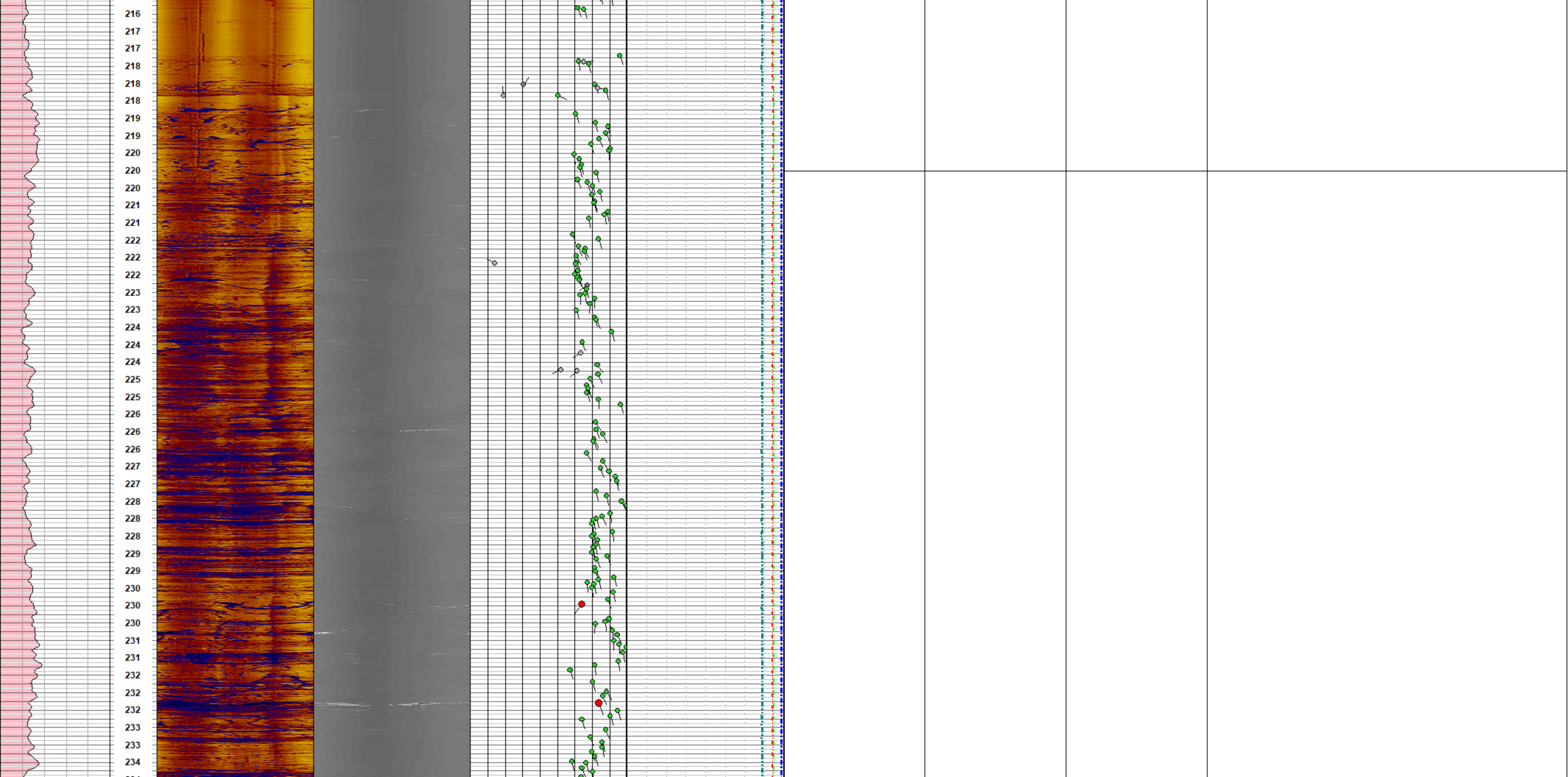




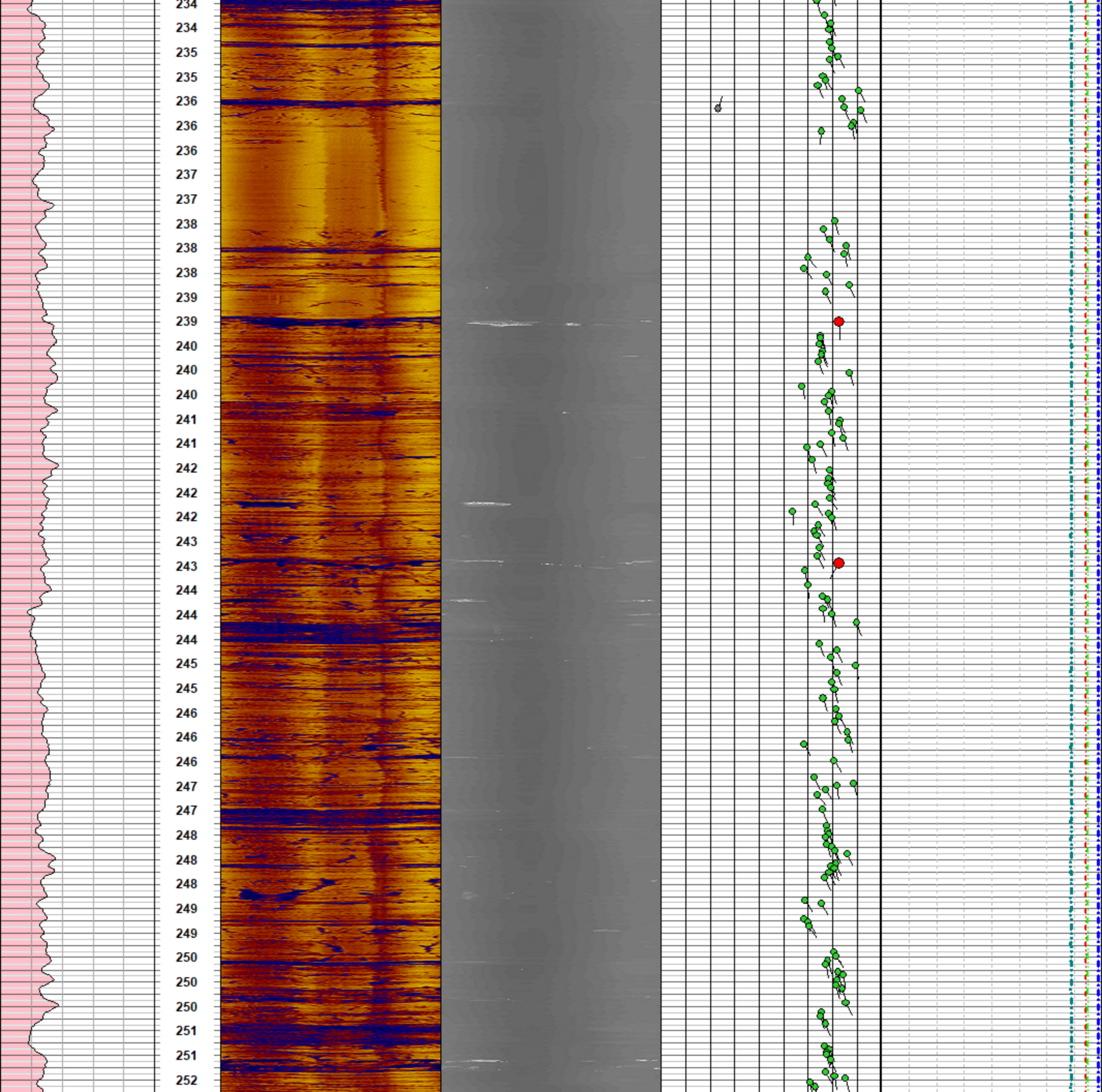


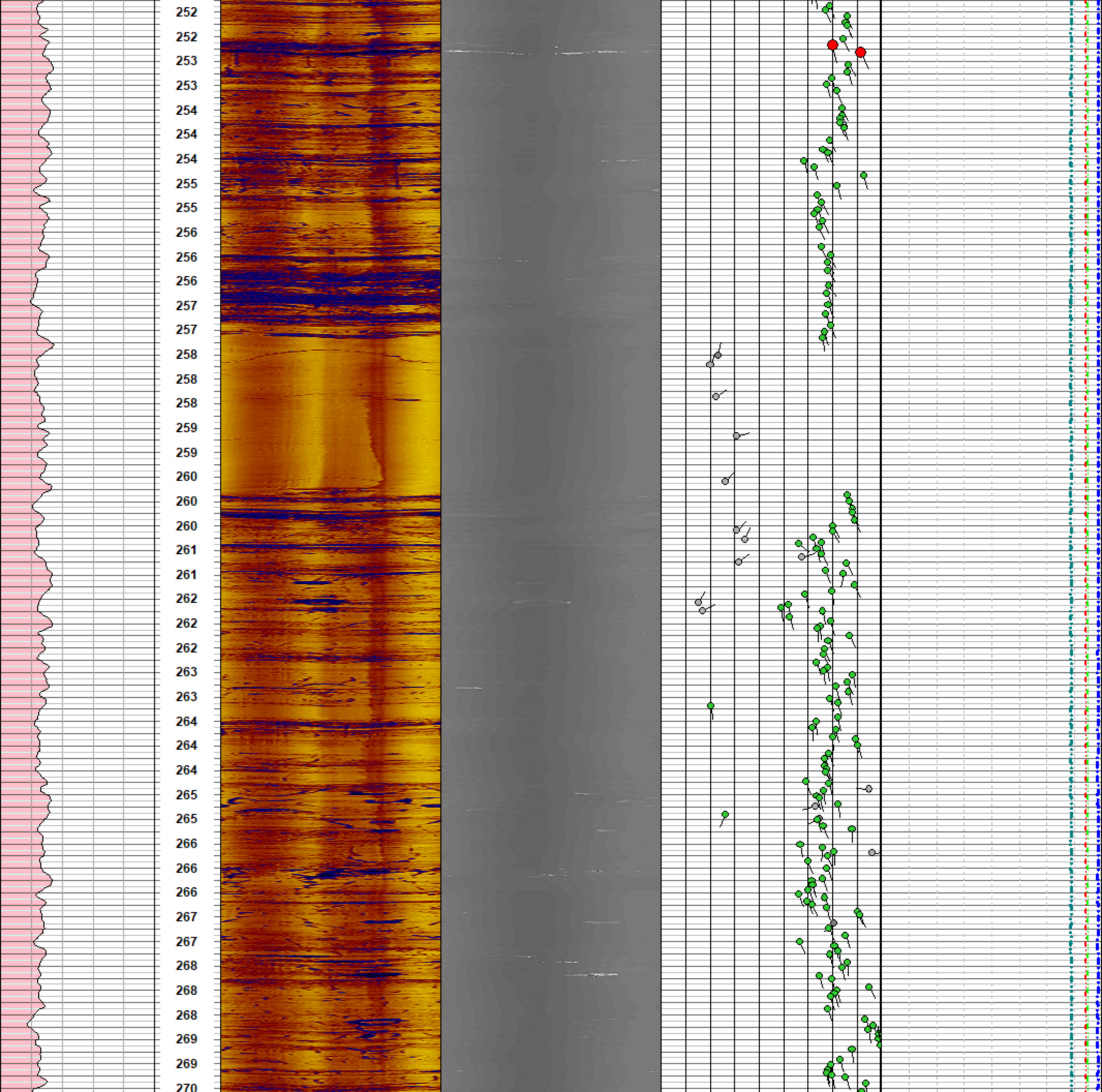




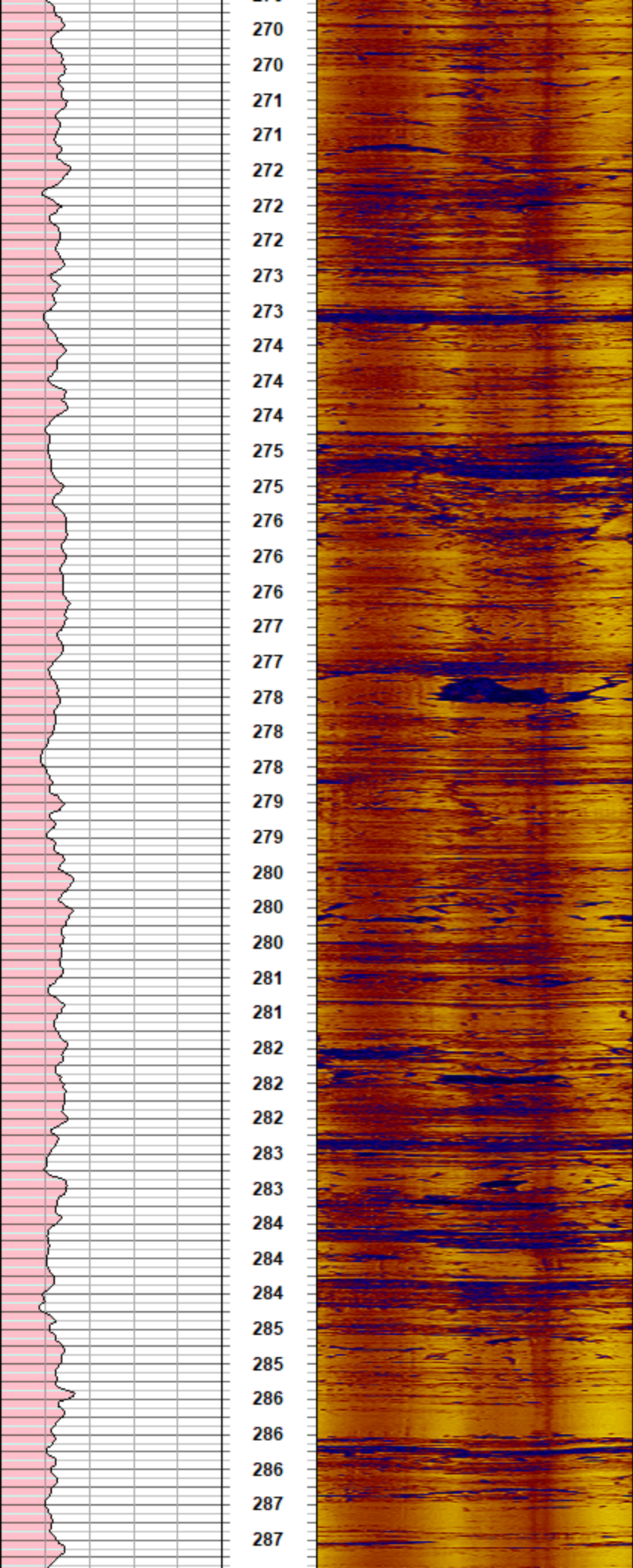




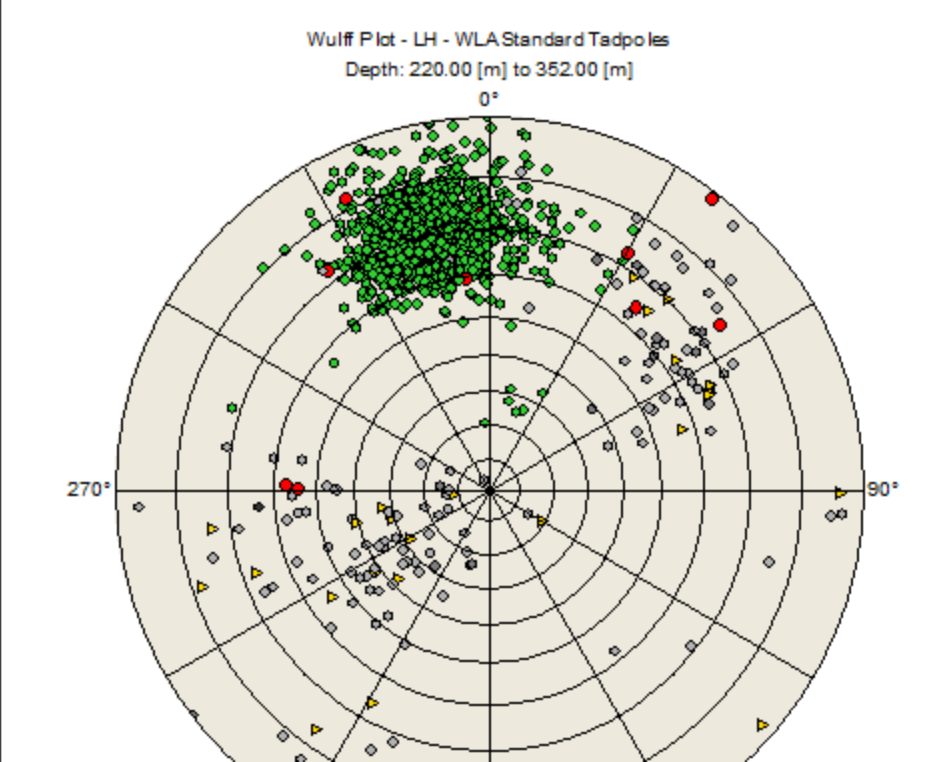
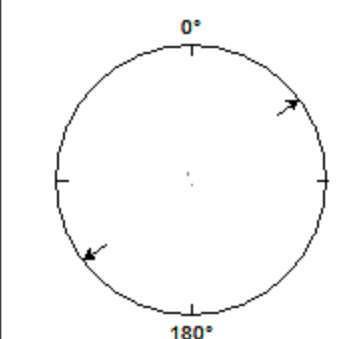
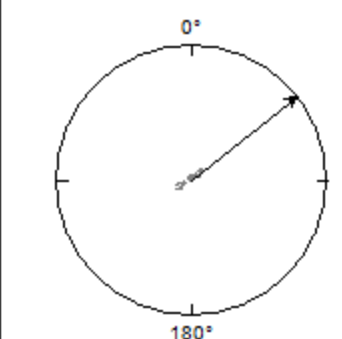
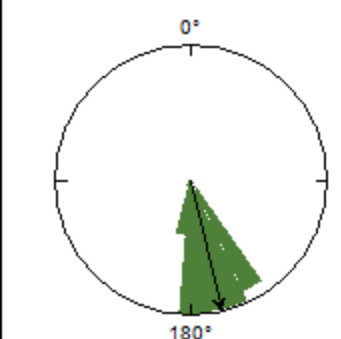
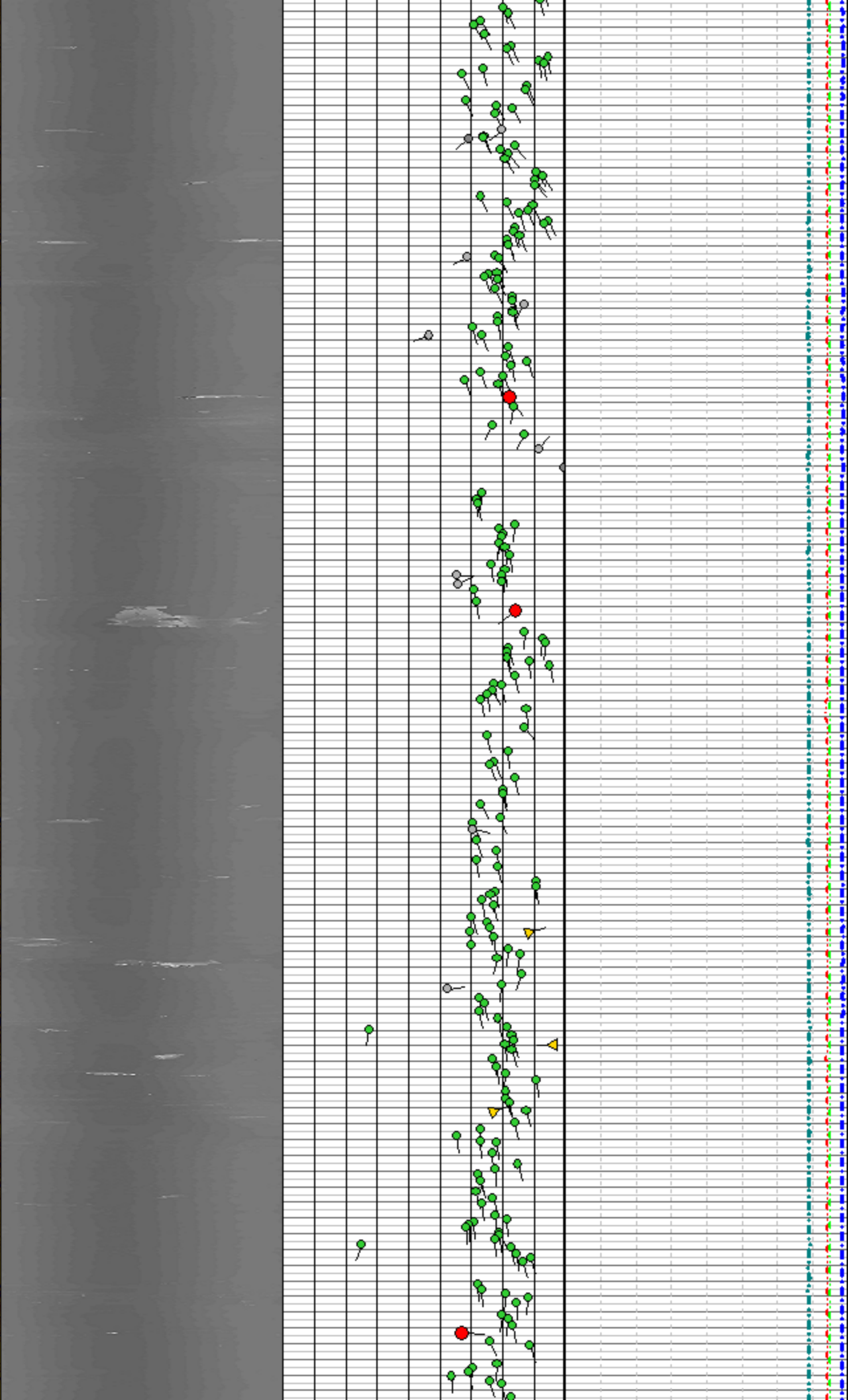




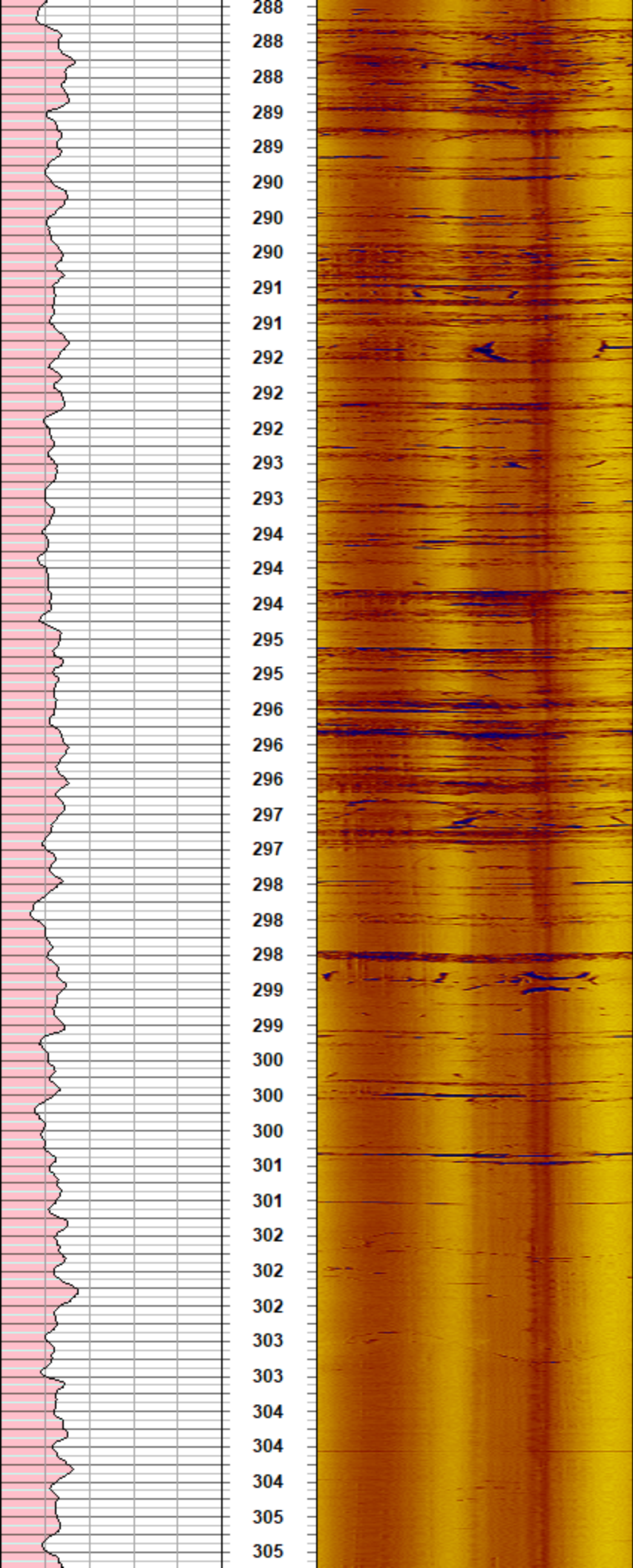




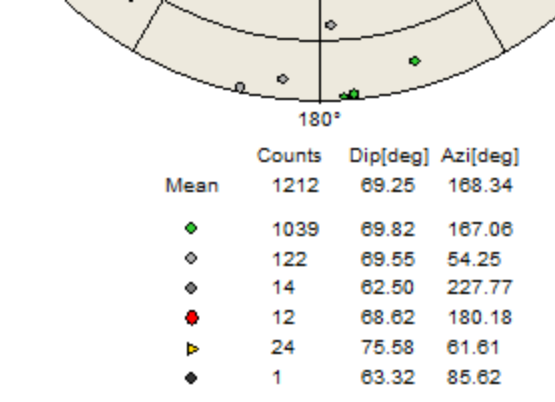
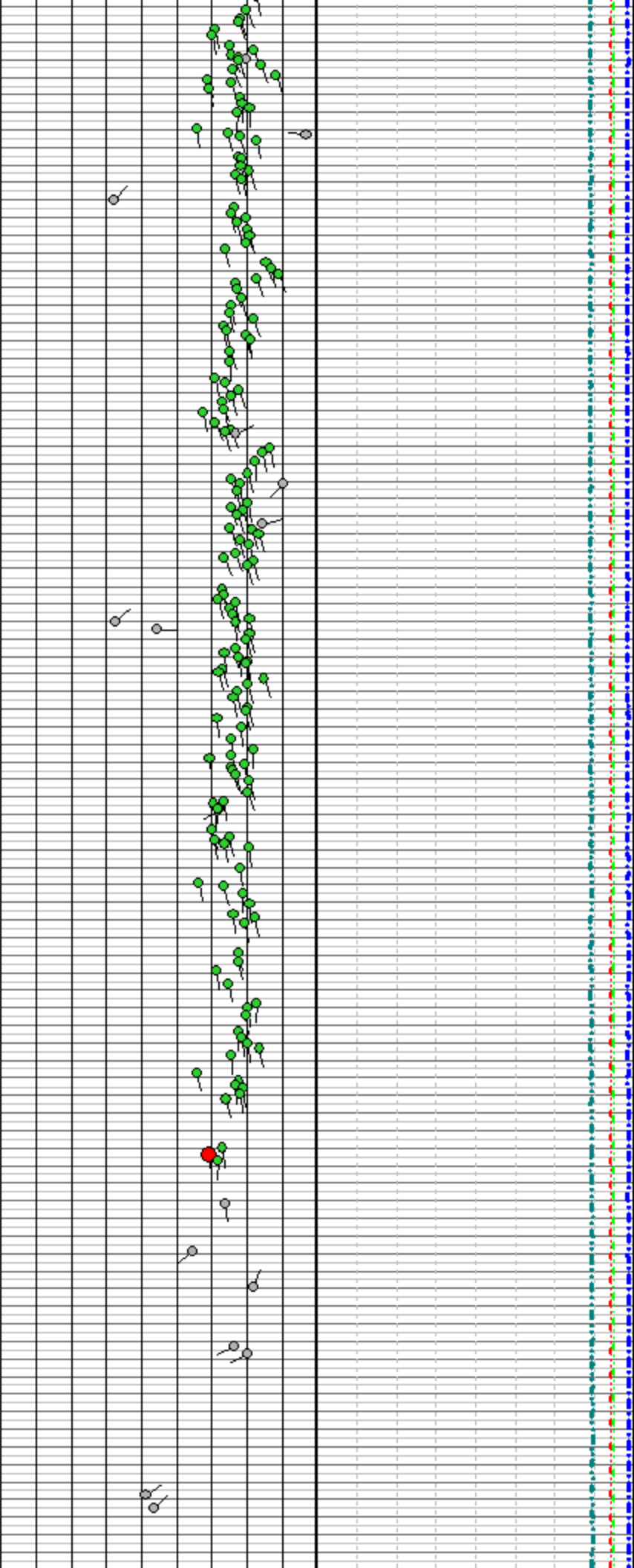
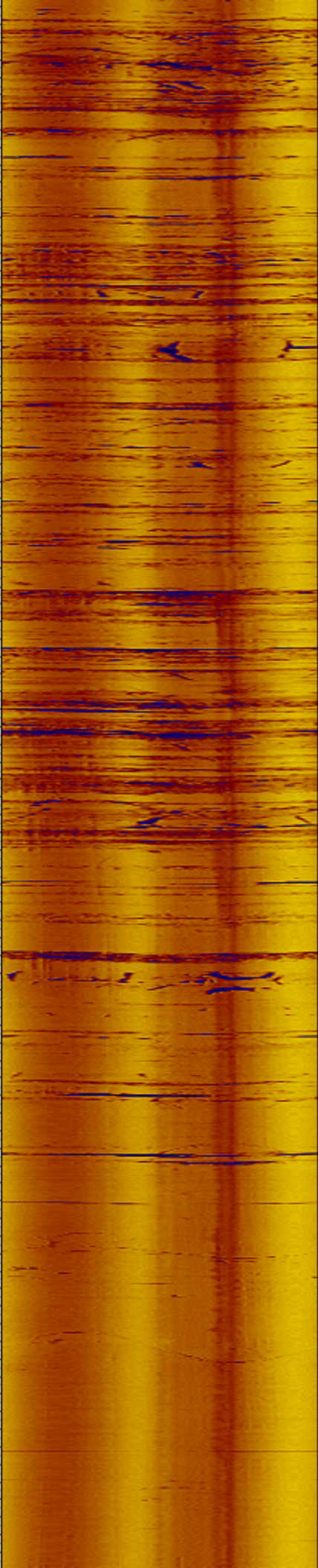
270  
270  
271  
271  
272  
272  
272  
273  
273  
274  
274  
274  
275  
275  
276  
276  
276  
277  
277  
278  
278  
278  
279  
279  
280  
280  
280  
281  
281  
282  
282  
282  
283  
283  
284  
284  
284  
285  
285  
286  
286  
286  
287  
287

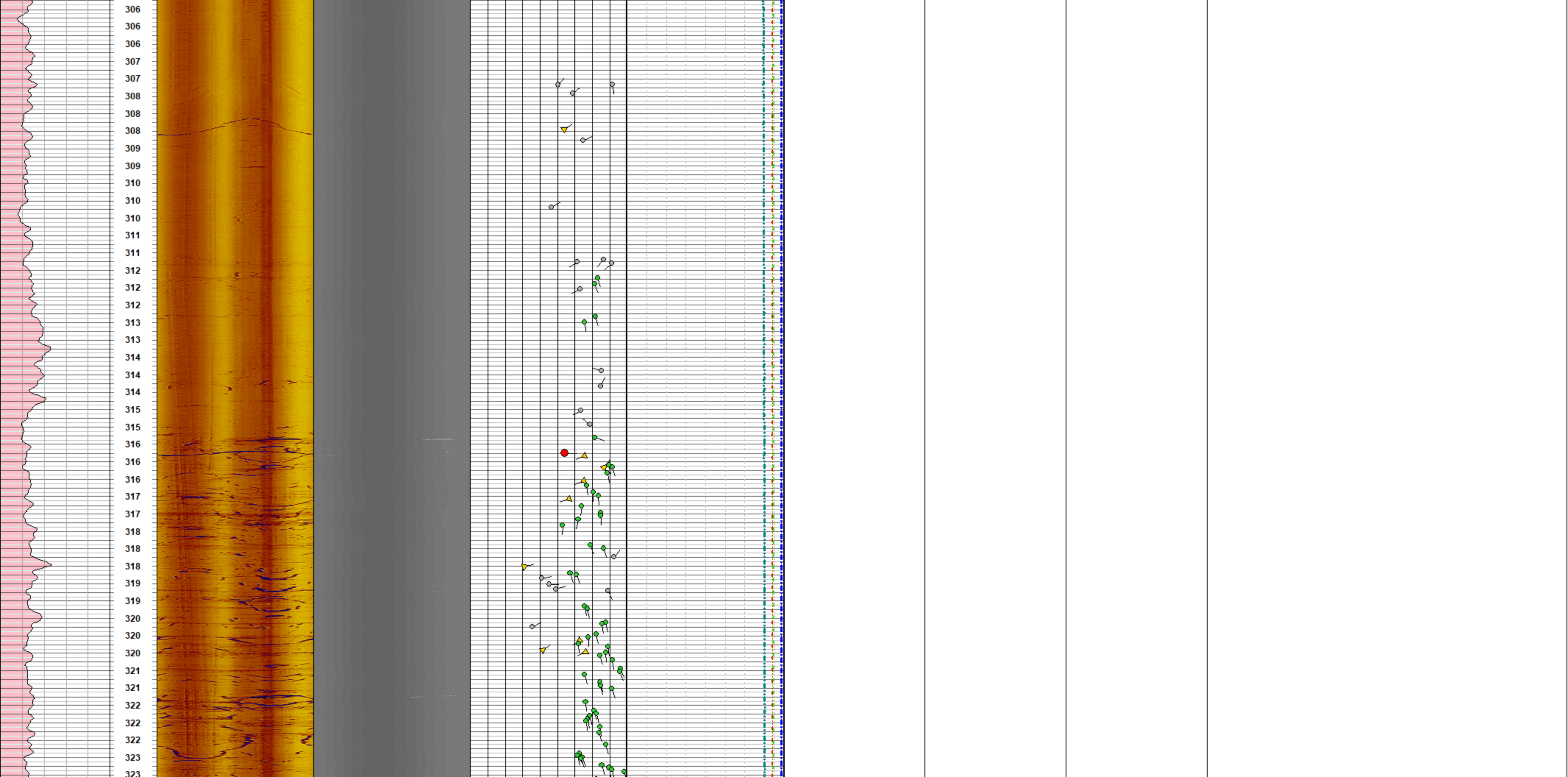






288  
288  
288  
289  
289  
290  
290  
290  
291  
291  
292  
292  
292  
293  
293  
294  
294  
294  
295  
295  
296  
296  
296  
297  
297  
298  
298  
298  
299  
299  
300  
300  
300  
301  
301  
302  
302  
302  
303  
303  
304  
304  
304  
305  
305









324  
324  
324  
325  
326  
326  
326  
327  
327  
328  
328  
328  
329  
329  
330  
330  
330  
331  
331  
332  
332  
332  
333  
333  
334  
334  
334  
335  
335  
336  
336  
336  
337  
337  
338  
338  
338  
339  
339  
340  
340  
340  
341

